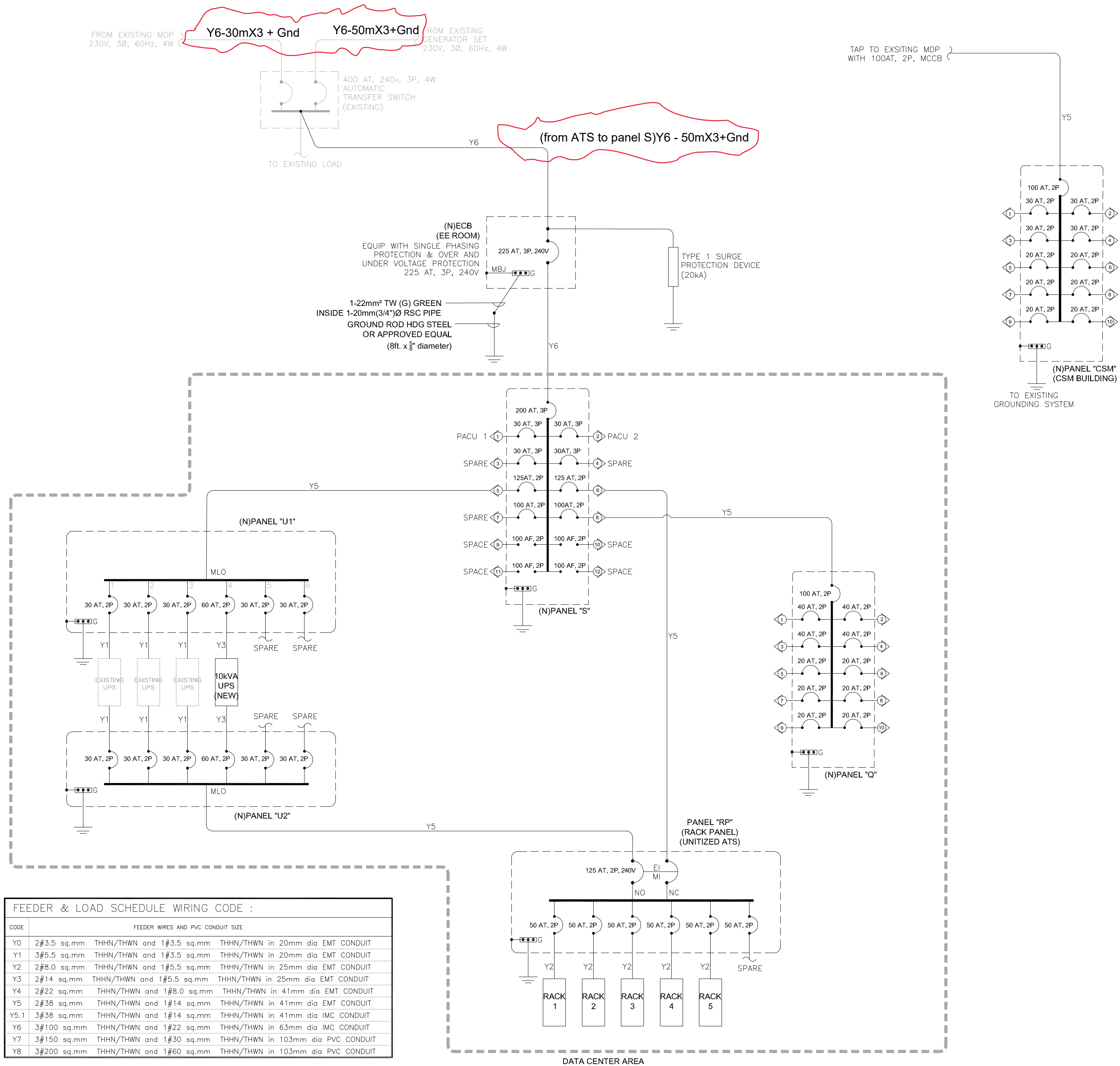


05/30/2024 edgemelo



SINGLE LINE DIAGRAM
NO SCALE

VOLTS:	240V	MAIN:	225A,3P
PHASE:	3	PANEL: "S"	BUSSING: 225A
WIRE:	3	LOCATION: DATA CENTER	TYPE: BOLT-ON
AIC:	25,000	ENCLOSURE TYPE: NEMA 1	MOUNTING: FLUSH

CKT	BKR	WIRE CODE	LOAD DESCRIPTION	LOAD (VA)	VOLT-AMPERE			LOAD (VA)	LOAD DESCRIPTION	WIRE CODE	BKR	CKT
					ØAB	ØBC	ØCA					
1	30-3P	Y1	PACU 1	2000	4000		2000	PACU 2	Y1	30-3P	2	
3	30-3P		SPARE	2000		4000	2000				30-3P	4
5	125-2P	Y5	PANEL "U1/U2"			13500	13500	PANEL "RP"	Y5	125-2P	6	
7	100-2P		SPARE			13500	13500	PANEL "Q"	Y5	100-2P	8	
9	100AF-2P		SPACE WITH BUS-BAR EXTENSION			0	0	SPACE WITH BUS-BAR EXTENSION		100AF-2P	10	
11	100AF-2P		SPACE WITH BUS-BAR EXTENSION			0	0	SPACE WITH BUS-BAR EXTENSION		100AF-2P	12	

CONNECTED kVA PER PHASE	36.50	24.10	17.50
DEMAND FACTOR APPLICATIONS	conn. load (kVA)	demand factor (%)	demand load (kVA)
RECEPTACLE (FIRST 10kVA)	6.6	100%	6.6
RECEPTACLE (OVER 10kVA)	0.0	50%	0.0
CONTINUOUS LOADS	39.5	125%	49.4
NON-CONTINUOUS LOADS	32.0	100%	32.0

TOTAL CONNECTED LOAD: 78.1 kVA
SPARE CAPACITY: 15.6 kVA
TOTAL DEMAND LOAD: 88.0 kVA
TOTAL SERVICE: 211.6 Amps

VOLTS:	240V	MAIN:	125AT, 2P
PHASE:	1	PANEL: "RP" (ATS)	BUSSING: 125A
WIRE:	2	LOCATION: DATA CENTER	TYPE: BOLT-ON
AIC:	10,000	ENCLOSURE TYPE: NEMA 1	MOUNTING: FLUSH

CKT	BKR	WIRE SIZE	LOAD DESCRIPTION	LOAD (VA)	VOLT-AMPERE			LOAD (VA)	LOAD DESCRIPTION	WIRE SIZE	BKR	CKT
					ØA	ØB	ØC					
1	50-2P	Y1	SERVER RACK	6500	6500	6500	6500	SERVER RACK	Y1	50-2P	2	
3	50-2P	Y1	SERVER RACK	6500	6500	6500	6500	SERVER RACK	Y1	50-2P	4	
5	50-2P	Y1	SERVER RACK	6500	3250	3250		SPARE		50-2P	6	

CONNECTED kVA PER PHASE	16.25	16.25	
DEMAND FACTOR APPLICATIONS	conn. load (kVA)	demand factor (%)	demand load (kVA)
RECEPTACLE (FIRST 10kVA)	0.0	100%	0.0
RECEPTACLE (OVER 10kVA)	0.0	50%	0.0
CONTINUOUS LOADS	13.0	125%	16.3
NON-CONTINUOUS LOADS	19.5	50%	9.8

TOTAL CONNECTED LOAD: 32.5 kVA
SPARE CAPACITY: 6.5 kVA
TOTAL DEMAND LOAD: 26.0 kVA
TOTAL SERVICE: 108.3 Amps

VOLTS:	240V	MAIN:	100AT, 2P
PHASE:	1	PANEL: "Q"	BUSSING: 100A
WIRE:	2	LOCATION: DATA CENTER	TYPE: BOLT-ON
AIC:	10,000	ENCLOSURE TYPE: NEMA 1	MOUNTING: FLUSH

CKT	BKR	WIRE SIZE	LOAD DESCRIPTION	LOAD (VA)	VOLT-AMPERE			LOAD (VA)	LOAD DESCRIPTION	WIRE SIZE	BKR	CKT
					ØA	ØB	ØC					
1	40-2P	Y2	3.0HP INVERTER SPLIT-TYPE A/C	3500	3500	3500	3500	3.0HP INVERTER SPLIT-TYPE A/C	Y2	40-2P	2	
3	40-2P		SPARE		0	0		SPARE		40-2P	4	
5	20-2P	Y0	LIGHTING - OFFICE AREA	1000	1400	1400	1800	RECEPTACLE - OFFICE AREA	Y0	20-2P	6	
7	20-2P		SPARE		0	0		SPARE		20-2P	8	
9	20-2P		SPARE		0	0		SPARE		20-2P	10	

CONNECTED kVA PER PHASE	4.90	4.90	
DEMAND FACTOR APPLICATIONS	conn. load (kVA)	demand factor (%)	demand load (kVA)
RECEPTACLE (FIRST 10kVA)	1.8	100%	1.8
RECEPTACLE (OVER 10kVA)	0.0	50%	0.0
CONTINUOUS LOADS	1.0	125%	1.3
NON-CONTINUOUS LOADS	7.0	50%	3.5

TOTAL CONNECTED LOAD: 9.8 kVA
SPARE CAPACITY: 2.0 kVA
TOTAL DEMAND LOAD: 6.6 kVA
TOTAL SERVICE: 27.3 Amps

VOLTS:	240V	MAIN:	100AT, 2P
PHASE:	1	PANEL: "CSM"	BUSSING: 100A
WIRE:	2	LOCATION: CSM EE ROOM	TYPE: BOLT-ON
AIC:	10,000	ENCLOSURE TYPE: NEMA 1	MOUNTING: FLUSH

CKT	BKR	WIRE SIZE	LOAD DESCRIPTION	LOAD (VA)	VOLT-AMPERE			LOAD (VA)	LOAD DESCRIPTION	WIRE SIZE	BKR	CKT
					ØA	ØB	ØC					
1	30-2P	Y1	SERVER RACK	5000	2500	2500		SPARE		30-2P	2	
3	30-2P		SPARE		0	0		SPARE		30-2P	4	
5	20-2P		SPARE		0	0		SPARE		20-2P	6	
7	20-2P		SPARE		0	0		SPARE		20-2P	8	
9	20-2P		SPARE		0	0		SPARE		20-2P	10	

CONNECTED kVA PER PHASE	2.50	2.50	
DEMAND FACTOR APPLICATIONS	conn. load (kVA)	demand factor (%)	demand load (kVA)
RECEPTACLE (FIRST 3kVA)	0.0	100%	0.0
RECEPTACLE (OVER 3kVA)	0.0	50%	0.0
CONTINUOUS LOADS	5.0	125%	6.3
NON-CONTINUOUS LOADS	0.0	50%	0.0

TOTAL CONNECTED LOAD: 5.0 kVA
SPARE CAPACITY: 1.0 kVA
TOTAL DEMAND LOAD: 6.3 kVA
TOTAL SERVICE: 26.0 Amps

PANEL SCHEDULE
NO SCALE

DESIGN PROFESSIONAL	PROJECT TITLE	OWNER	R.A 9266, ARTICLE IV, SEC. 33	REVISIONS	DESIGN BY	SHEET CONTENT	SHEET NO.
RODELO L. FADROGANE, IIEE, NAMPAP	UPGRADING OF DATA CENTER	UP MINDANAO	DRAWINGS AND SPECIFICATIONS DULY SIGNED, STAMPED OR SEALED AS INSTRUMENTS OR SERVICE ARE THE PROPERTY AND DOCUMENTS OF THE ARCHITECT WHICH THEY ARE MADE OR NOT. IT SHALL BE UNLAWFUL FOR ANY PERSON WITHOUT THROUGH THE WRITTEN CONSENT OF THE ARCHITECT OR AUTHOR OF THE DOCUMENTS TO DUPLICATE OR TO MAKE COPIES OF THE SAID DOCUMENTS TO BE USED IN REPETITIONS OF AND FOR OTHER PROJECTS WHETHER EXECUTED PARTLY OR IN WHOLE.	REMARKS	DRAWN BY: RLF	AS SHOWN	ELECTRICAL
PRC REG. #: 0003611	PTR #: 793 6567	BAGO OSHIRO, DAVAO CITY		DATE			E-1
VALIDITY: 01-25-2026	DATE ISSUED: 01-04-2024	LOCATION					
TIN: 934 727 252	PLACE ISSUED: DAVAO CITY						